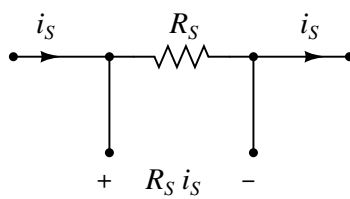


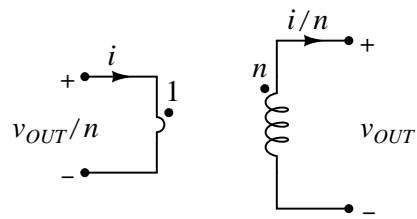
Merenje struje

Šant

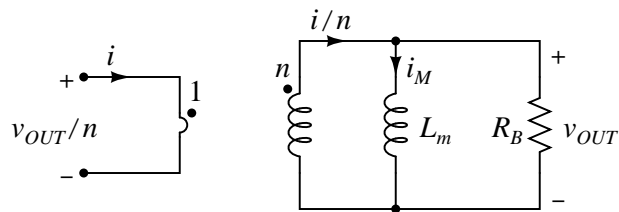


Slika 1: Šant.

Strujni transformator



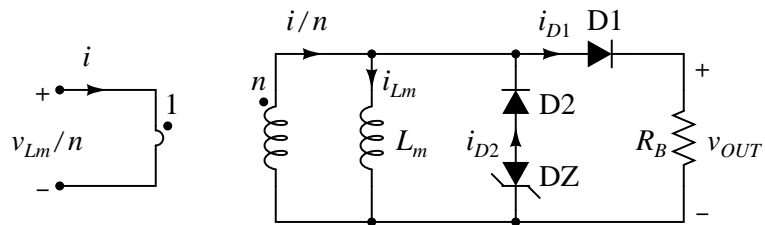
Slika 2: Strujni transformator.



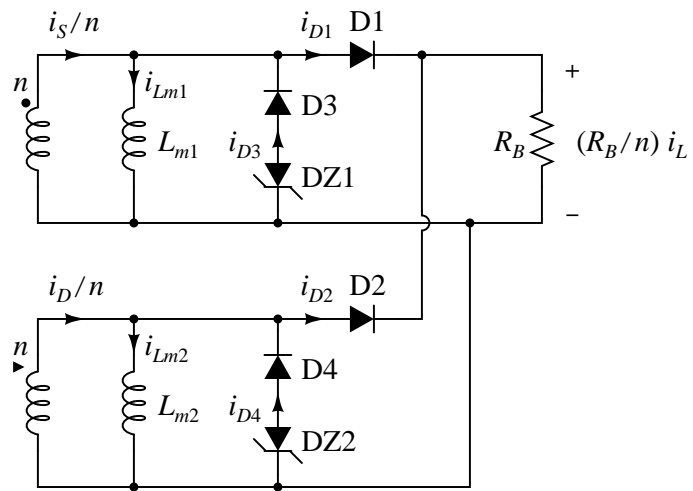
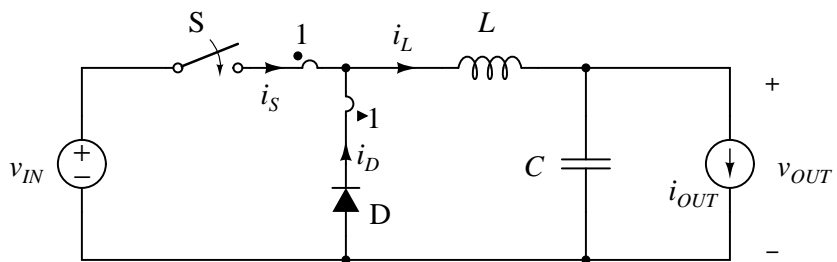
Slika 3: Strujni transformator, izdvojena magnetizaciona induktivnost i dodat otpornik.

$$\frac{v_{OUT}(s)}{i(s)} = \frac{R_B}{n} \frac{sL_m}{R_B + sL_m} = \frac{R_B}{n} \frac{\frac{s}{\omega_P}}{1 + \frac{s}{\omega_P}}$$

$$\omega_P = \frac{R_B}{L_m}$$

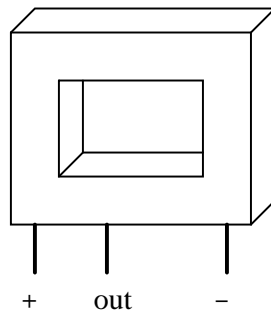


Slika 4: Kolo za merenje struje koja ima jednosmernu komponentu.

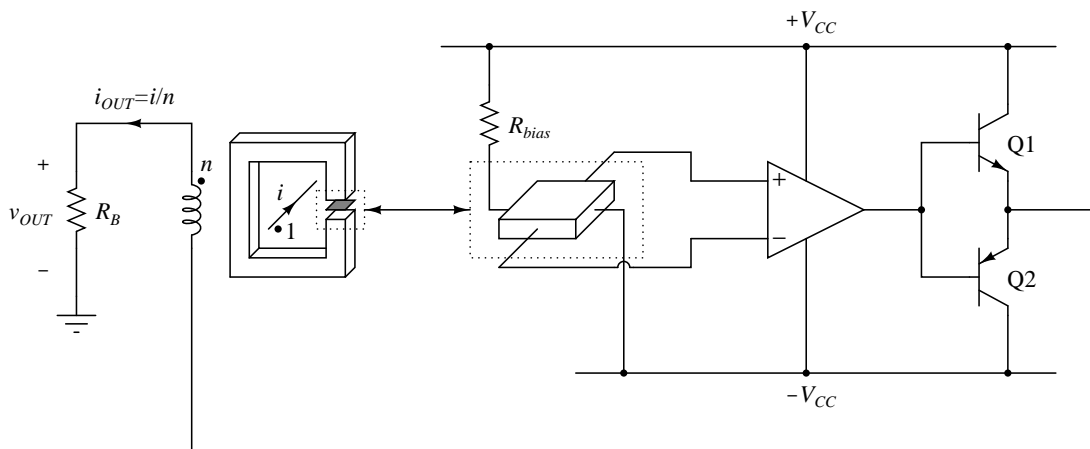


Slika 5: Kolo za merenje struje kalema.

Kompenzovani Holov senzor



Slika 6: Spoljnji izgled kompenzovanog Holovog senzora.



Slika 7: Struktura kompenzovanog Holovog senzora.